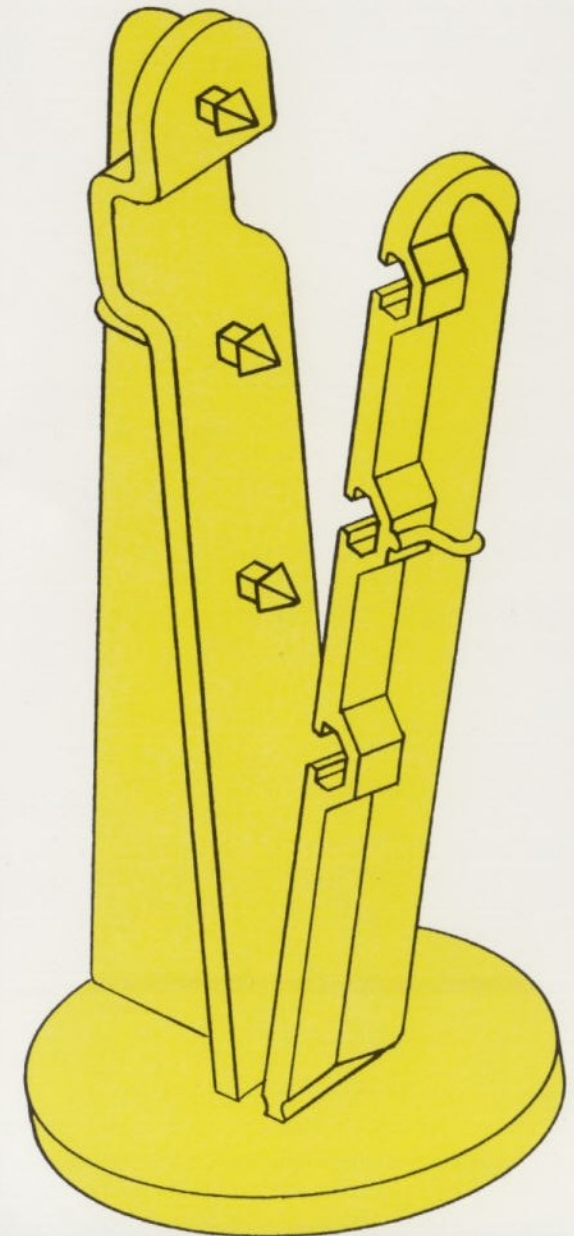


QUICK-GUARD

HELP PREVENT SILT-FENCE BLOWOUTS

Make Inspection Easy for Regulators
and the Responsible Party



Features

- Made of recyclable, nontoxic, noncorrosive, nonleaching plastic
- Self-locking for assured fence anchoring and control
- Easy to install
- Bright yellow tip protrudes above ground for fast, easy inspection
- Will end blowouts and washout problems effectively and affordably

Specifications

Height: 8" above base / 20.3 cm

Base: 3" diameter / 7.6 cm

Material: single-piece injected plastic; noncorrosive, nonleaching, nontoxic and recyclable

Features: self-locking, bright yellow for easy drive-by inspection

Installation Procedure

1. Place a minimum of one QUICK-GUARD Silt Anchor/Gauge halfway between each support post by clamping to bottom of fabric. Once it is clamped, the device will self-lock.
2. Place each QUICK-GUARD Anchor/Gauge in the bottom of the required 6"/15.2 cm trench and backfill. Leave 2"/5.1 cm top lip protruding above ground.
3. Once installed, the tip of each bright yellow QUICK-GUARD showing above ground allows for fast and easy drive-by inspection.
4. Upon removal of fence, QUICK-GUARD anchor/gauges can be recycled with the fabric.

"...correct installation and maintenance of this product can supplement the use of wood or metal stakes to anchor silt fencing and prevent blowouts."

John M. Smith
Director, Alabama Department of Environmental Management

"...a beneficial alternative in helping to minimize the problem of silt fence blowouts."

Perry L. Oakes, P.E.
Alabama State Conservation Engineer

"...an effective tool that would prevent siltation to streams and lakes. This product, which is made from recycled plastic, allows one to gauge its effectiveness through simple site inspection and because of its design it is easy to install properly and prevent siltation 'break-outs.' I recommend that this product be used."

Pete Conroy
Governor's Liaison for Environmental Affairs

"I have seen first hand the problems caused by improper installation and insufficient anchoring of silt fencing resulting in erosion problems. Also, I have had the opportunity to study the silt anchor/gauge and feel that it could be a solution to the ongoing problems faced in the field. It would be my recommendation to incorporate this device into the erosion control requirements."

Jerry C. Drake
Director/County Engineer, Jefferson County, Alabama

"a simple solution to a vexing problem..."

Lowell Shipp
City Engineer, Mountain Brook, Alabama

"This device could alleviate most of the inherent problems encountered with silt fencing and its installation."

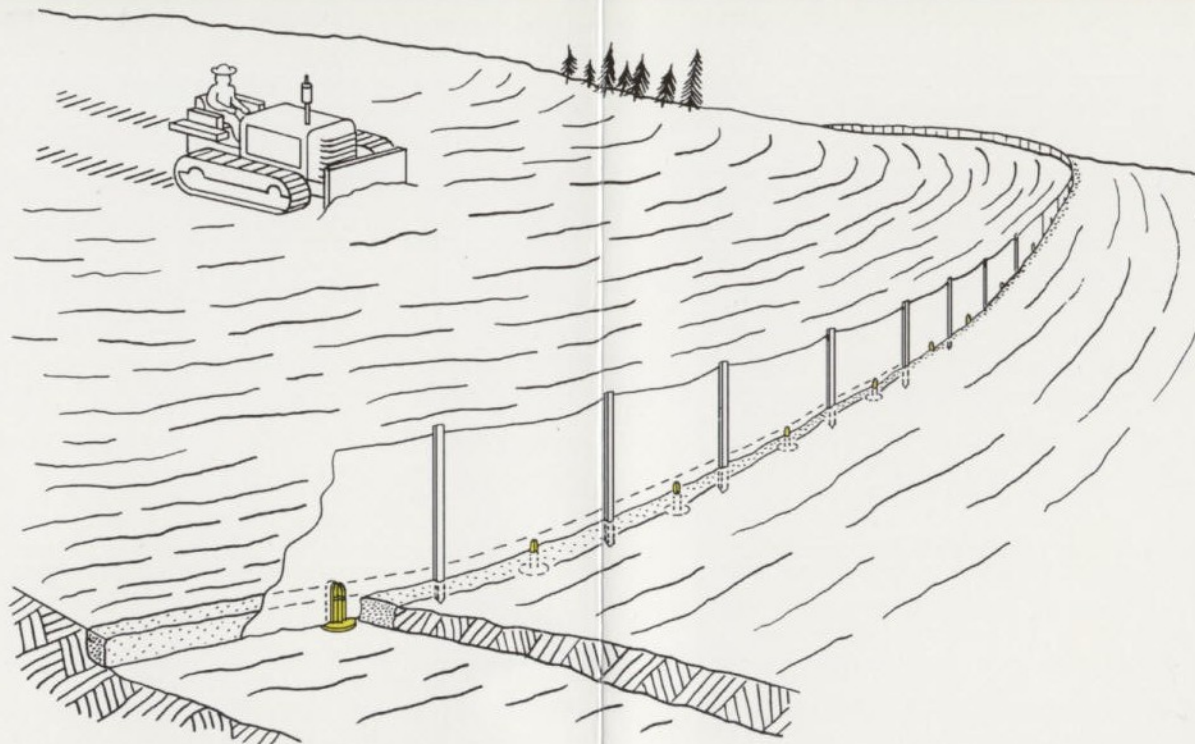
Jody Sallia
President, BEC/allwaste



ENVIRO-GUARD, L.L.C.

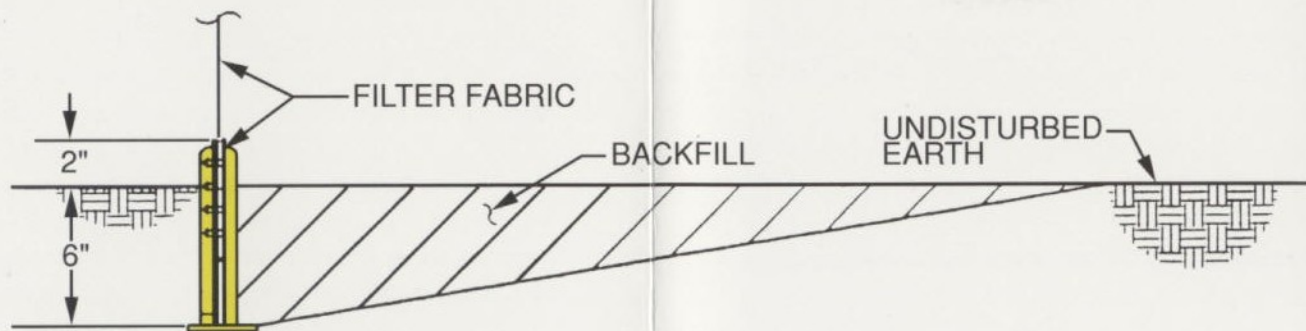
1037 22nd Street South, Birmingham, AL 35205
(205) 324-3250 1-800-325-3895 fax (205) 324-3256

Now QUICK-GUARD Silt Anchor/Gauge Assures Proper Fence Installation, Easy Inspection, and Erosion Control



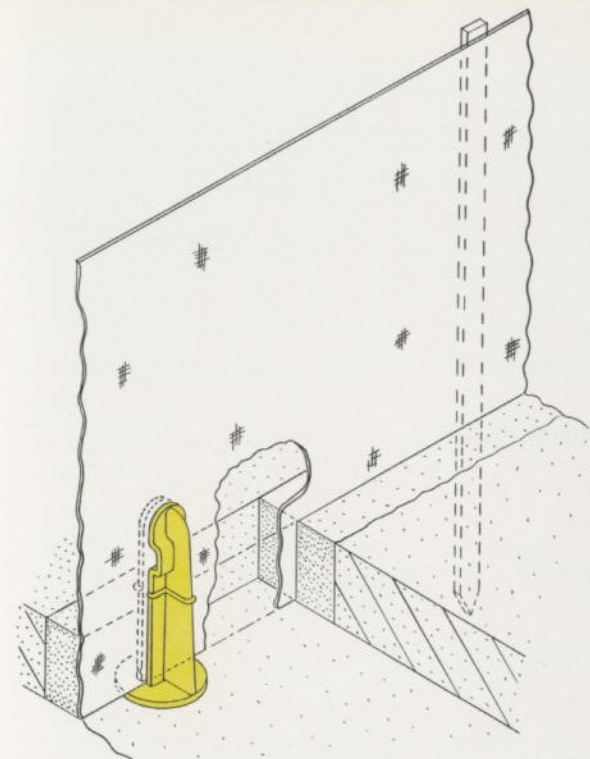
Inspection is so easy you can do it driving by...

When installed, the bright yellow QUICK-GUARD protrudes 2" / 5.1 cm above ground, allowing for easy drive-by inspection. Once you see those yellow tips between every support post, you know your fence is properly installed.



Simply clamp to fabric and install in trench...

The QUICK-GUARD Silt Anchor/Gauge will put an end to the erosion problems and inspection headaches caused by improper silt fence installation. Affordable and easy to install, the QUICK-GUARD simply clamps to the bottom of the fence fabric. After you have clamped it, the self-locking QUICK-GUARD will not release. When installed in the required 6" / 15.2 cm trench, this unique device will hold your silt fence in position effectively preventing erosion and assuring compliance with environmental standards.



Meets all environmental standards...

The QUICK-GUARD Silt Anchor/Gauge is recyclable, nontoxic, noncorrosive, and nonleaching.

Manufactured of the same recyclable plastic used in ice-cube trays, the QUICK-GUARD resists the worst extremes of heat and cold.

For more information...

For more information or to order QUICK-GUARD Silt Anchor/Gauges, please contact:

ENVIRO-GUARD, L.L.C.
1037 22nd Street South
Birmingham, AL 35205
(205) 324-3250
1-800-325-3895
fax (205) 324-3256